

Royal Oak Dr between West Saanich Rd and Elk Lake Rd
November 22, 2020 To November 26, 2020



The data presented here is for information purposes only and should not be considered authoritative for construction, geotechnical, engineering, navigational, legal, or other site-specific uses. The information shared is owned by the Transportation Division of the Engineering Department at the District of Saanich. Accuracy is not guaranteed.

Start Date: 23-Nov-20
 Start Time: 22:01
 Station ID: M0030-02

Location 1: Royal Oak Dr between West Saanich Rd and Elk Lake Rd

Note:

DATE:	November 23, 2020		November 24, 2020		November 25, 2020		November 26, 2020		November 27, 2020		WK AVG		WK AVG	HOURLY
	MON		TUE		WED		THURS		FRI		EB	WB	CH 1+2	%
Time:	EB	WB	EB	WB	EB	WB	EB	WB	EB	WB	EB	WB		
12-1 AM	19	12	22	15	18	13	32	19			23	15	38	0.3%
1-2 AM	10	5	10	6	4	7	9	9			8	7	15	0.1%
2-3 AM	8	10	11	11	5	10	7	18			8	12	20	0.1%
3-4 AM	4	19	4	18	11	15	6	16			6	17	23	0.2%
4-5 AM	13	32	16	29	14	30	14	28			14	30	44	0.3%
5-6 AM	33	117	40	121	31	107	40	123			36	117	153	1.1%
6-7 AM	132	322	144	329	173	327	143	315			148	323	471	3.3%
7-8 AM	364	573	404	580	370	598	389	590			382	585	967	6.7%
8-9 AM	487	631	507	692	513	714	546	713			513	688	1201	8.3%
9-10 AM	467	485	441	480	460	504	480	579			462	512	974	6.7%
10-11 AM	420	508	407	488	383	478	458	508			417	496	913	6.3%
11-12 PM	517	554	477	528	531	543	492	543			504	542	1046	7.2%
12-1 PM	509	533	529	538	539	582	540	523			529	544	1073	7.4%
1-2 PM	500	556	538	542	520	579	546	594			526	568	1094	7.6%
2-3 PM	508	546	496	590	556	580	549	569			527	571	1099	7.6%
3-4 PM	694	664	636	641	635	681	675	714			660	675	1335	9.2%
4-5 PM	619	596	610	528	633	578	643	587			626	572	1199	8.3%
5-6 PM	500	450	525	420	530	451	551	472			527	448	975	6.7%
6-7 PM	320	277	304	279	330	294	339	273			323	281	604	4.2%
7-8 PM	219	248	252	241	212	210	237	225			230	231	461	3.2%
8-9 PM	147	173	143	178	141	155	173	182			151	172	323	2.2%
9-10 PM	111	86	103	98	112	91	123	97			112	93	205	1.4%
10-11 PM	65	79	69	71	62	81	77	89			68	80	148	1.0%
11-12 AM	57	34	60	34	64	36	57	48			60	38	98	0.7%
LANES	6723	7510	6748	7457	6847	7664	7126	7834			6861	7616	14477	100.0%
TOTAL	14233		14205		14511		14960				14480			
	MON		TUE		WED		THURS		FRI		WK AVG			

PEAK HOUR					TOTAL VEHICALS-PEAK PERIODS		2 HOUR PEAK INTERVALS						
MAX. 7 - 9 am PEAK HOUR	1201	⇒	8.3%	between	8-9 AM	6461	⇒	6 HR TOTAL	2 HR AM (7 - 9 AM)				
MAX. 7 - 11 am PEAK HOUR	1201	⇒	8.3%	between	8-9 AM	4341	⇒	4 HR TOTAL	VEH / HR	VEH / 2HR	2 HR %		
									7-8 AM	967	2168	15.0%	
									8-9 AM	1201			
MAX. 11 am - 1 pm PEAK HOUR	1073	⇒	7.4%	between	12-1 PM			24 HOUR FACTORS	2 HR NOON (11 - 1 PM)				
MAX. 11 am - 3 pm PEAK HOUR	1099	⇒	7.6%	between	2-3 PM				VEH / HR	VEH / 2HR	2 HR %		
MAX. 4 - 6 pm PEAK HOUR	1199	⇒	8.3%	between	4-5 PM				11-12 PM	1046	2120	14.6%	
MAX. 3 - 6 pm PEAK HOUR	1335	⇒	9.2%	between	3-4 PM				12-1 PM	1073			
						2.24	⇒	6-24 HR FACT.	2 HR PM (4 - 6 PM)				
						3.34	⇒	4-24 HR FACT.	VEH / HR	VEH / 2HR	2 HR %		
									4-5 PM	1199	2173	15.0%	
									5-6 PM	975			

Royal Oak Dr between West Saanich Rd and Elk Lake Rd

Westbound

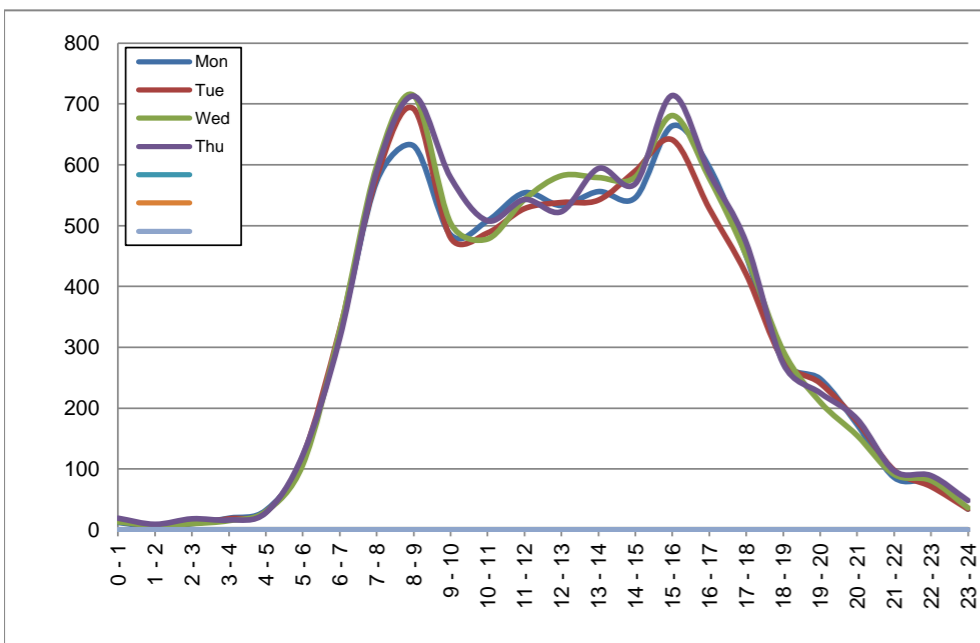
November 23, 2020 to November 26, 2020

Hourly Volumes

Time Period	Mon	Tue	Wed	Thu			
	Nov 23	Nov 24	Nov 25	Nov 26			
0 - 1	12	15	13	19			
1 - 2	5	6	7	9			
2 - 3	10	11	10	18			
3 - 4	19	18	15	16			
4 - 5	32	29	30	28			
5 - 6	117	121	107	123			
6 - 7	322	329	327	315			
7 - 8	573	580	598	590			
8 - 9	631	692	714	713			
9 - 10	485	480	504	579			
10 - 11	508	488	478	508			
11 - 12	554	528	543	543			
12 - 13	533	538	582	523			
13 - 14	556	542	579	594			
14 - 15	546	590	580	569			
15 - 16	664	641	681	714			
16 - 17	596	528	578	587			
17 - 18	450	420	451	472			
18 - 19	277	279	294	273			
19 - 20	248	241	210	225			
20 - 21	173	178	155	182			
21 - 22	86	98	91	97			
22 - 23	79	71	81	89			
23 - 24	34	34	36	48			
Day Total	7510	7457	7664	7834			

15-Minute Volumes

Time Start	Mon	Tue	Wed	Thu				Time Start	Mon	Tue	Wed	Thu			
	Nov 23	Nov 24	Nov 25	Nov 26					Nov 23	Nov 24	Nov 25	Nov 26			
0:00	3	4	6	7				12:00	139	124	144	114			
0:15	4	3	0	6				12:15	138	138	148	127			
0:30	2	5	6	2				12:30	127	148	140	132			
0:45	3	3	1	4				12:45	129	128	150	150			
1:00	1	2	2	2				13:00	145	143	147	152			
1:15	1	2	1	1				13:15	124	129	152	147			
1:30	1	1	0	3				13:30	139	142	140	137			
1:45	2	1	4	3				13:45	148	128	140	158			
2:00	5	1	0	2				14:00	124	143	132	138			
2:15	2	5	1	2				14:15	134	149	166	131			
2:30	0	3	5	3				14:30	132	166	142	149			
2:45	3	2	4	11				14:45	156	132	140	151			
3:00	5	6	4	3				15:00	176	178	171	175			
3:15	5	3	4	2				15:15	195	180	174	187			
3:30	3	1	3	6				15:30	168	150	164	173			
3:45	6	8	4	5				15:45	125	133	172	179			
4:00	6	4	6	4				16:00	168	154	143	159			
4:15	10	6	9	11				16:15	148	132	157	155			
4:30	10	9	6	5				16:30	132	129	136	138			
4:45	6	10	9	8				16:45	148	113	142	135			
5:00	14	20	13	18				17:00	122	123	127	125			
5:15	25	21	21	25				17:15	136	103	123	131			
5:30	42	36	39	35				17:30	106	92	125	116			
5:45	36	44	34	45				17:45	86	102	76	100			
6:00	45	41	44	36				18:00	74	74	78	76			
6:15	67	72	67	73				18:15	86	78	84	68			
6:30	117	105	110	106				18:30	62	58	77	68			
6:45	93	111	106	100				18:45	55	69	55	61			
7:00	105	103	110	108				19:00	61	70	47	53			
7:15	125	116	125	120				19:15	78	57	53	54			
7:30	174	184	191	181				19:30	46	67	49	62			
7:45	169	177	172	181				19:45	63	47	61	56			
8:00	153	156	167	161				20:00	52	52	52	56			
8:15	160	167	185	181				20:15	38	42	47	46			
8:30	159	172	158	185				20:30	34	46	31	43			
8:45	159	197	204	186				20:45	49	38	25	37			
9:00	130	122	126	155				21:00	25	17	26	30			
9:15	112	104	120	123				21:15	26	27	22	22			
9:30	130	124	111	162				21:30	17	34	25	25			
9:45	113	130	147	139				21:45	18	20	18	20			
10:00	121	118	119	129				22:00	26	19	27	28			
10:15	135	137	117	125				22:15	20	22	23	23			
10:30	120	111	110	125				22:30	16	14	17	21			
10:45	132	122	132	129				22:45	17	16	14	17			
11:00	138	123	126	115				23:00	13	11	15	17			
11:15	141	130	134	143				23:15	8	10	8	11			
11:30	130	134	143	134				23:30	6	8	5	13			
11:45	145	141	140	151				23:45	7	5	8	7			



Site notes:

Royal Oak Dr between West Saanich Rd and Elk Lake Rd

Eastbound

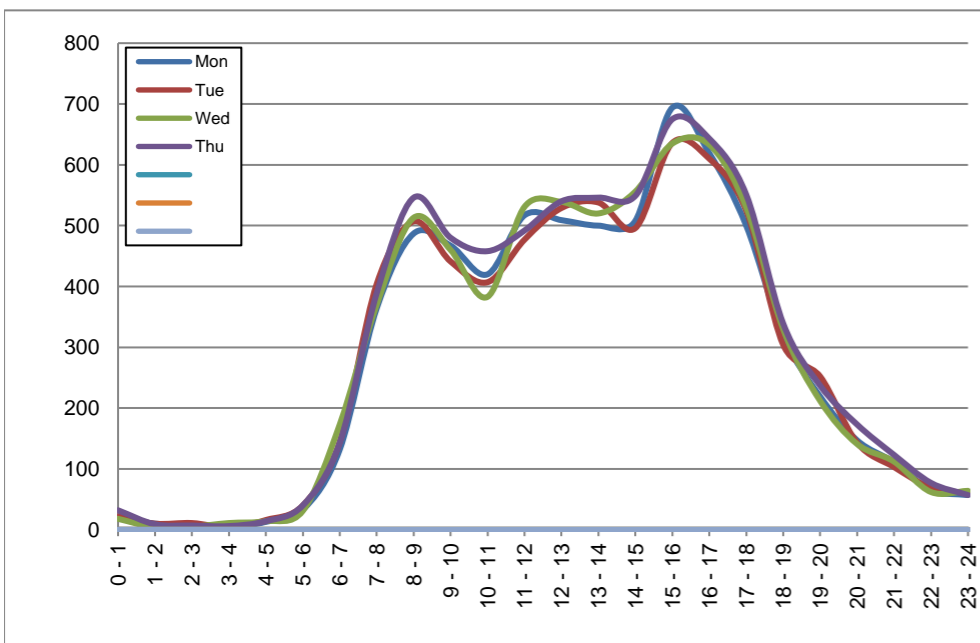
November 23, 2020 to November 26, 2020

Hourly Volumes

Time Period	Mon	Tue	Wed	Thu			
	Nov 23	Nov 24	Nov 25	Nov 26			
0 - 1	19	22	18	32			
1 - 2	10	10	4	9			
2 - 3	8	11	5	7			
3 - 4	4	4	11	6			
4 - 5	13	16	14	14			
5 - 6	33	40	31	40			
6 - 7	132	144	173	143			
7 - 8	364	404	370	389			
8 - 9	487	507	513	546			
9 - 10	467	441	460	480			
10 - 11	420	407	383	458			
11 - 12	517	477	531	492			
12 - 13	509	529	539	540			
13 - 14	500	538	520	546			
14 - 15	508	496	556	549			
15 - 16	694	636	635	675			
16 - 17	619	610	633	643			
17 - 18	500	525	530	551			
18 - 19	320	304	330	339			
19 - 20	219	252	212	237			
20 - 21	147	143	141	173			
21 - 22	111	103	112	123			
22 - 23	65	69	62	77			
23 - 24	57	60	64	57			
Day Total	6723	6748	6847	7126			

15-Minute Volumes

Time Start	Mon	Tue	Wed	Thu				Time Start	Mon	Tue	Wed	Thu			
	Nov 23	Nov 24	Nov 25	Nov 26					Nov 23	Nov 24	Nov 25	Nov 26			
0:00	6	6	8	9				12:00	121	133	133	127			
0:15	4	7	8	11				12:15	135	129	146	129			
0:30	5	4	1	6				12:30	125	146	135	133			
0:45	4	5	1	6				12:45	128	121	125	151			
1:00	2	3	1	4				13:00	140	144	131	131			
1:15	1	2	1	1				13:15	126	136	136	132			
1:30	5	2	0	1				13:30	103	123	127	147			
1:45	2	3	2	3				13:45	131	135	126	136			
2:00	2	4	1	1				14:00	108	118	142	137			
2:15	2	3	0	3				14:15	111	130	130	132			
2:30	3	1	0	0				14:30	135	121	138	124			
2:45	1	3	4	3				14:45	154	127	146	156			
3:00	1	0	3	0				15:00	174	158	162	185			
3:15	0	1	3	2				15:15	180	150	164	157			
3:30	3	1	1	1				15:30	164	170	146	180			
3:45	0	2	4	3				15:45	176	158	163	153			
4:00	3	3	3	2				16:00	129	134	178	158			
4:15	1	4	5	5				16:15	179	145	135	157			
4:30	2	3	3	3				16:30	165	159	165	161			
4:45	7	6	3	4				16:45	146	172	155	167			
5:00	4	8	4	4				17:00	158	160	137	153			
5:15	4	5	6	9				17:15	125	149	173	156			
5:30	8	12	9	9				17:30	117	112	122	137			
5:45	17	15	12	18				17:45	100	104	98	105			
6:00	27	19	26	19				18:00	88	73	88	99			
6:15	15	29	33	26				18:15	83	84	78	77			
6:30	54	35	58	45				18:30	73	74	85	91			
6:45	36	61	56	53				18:45	76	73	79	72			
7:00	91	79	78	99				19:00	63	89	64	85			
7:15	92	98	98	81				19:15	62	63	58	49			
7:30	78	91	97	100				19:30	62	48	47	51			
7:45	103	136	97	109				19:45	32	52	43	52			
8:00	103	109	113	127				20:00	41	46	43	58			
8:15	106	126	126	128				20:15	38	39	39	40			
8:30	124	123	130	125				20:30	35	27	28	36			
8:45	154	149	144	166				20:45	33	31	31	39			
9:00	135	121	125	134				21:00	43	27	31	41			
9:15	112	112	123	117				21:15	21	31	29	30			
9:30	98	102	100	110				21:30	26	25	26	29			
9:45	122	106	112	119				21:45	21	20	26	23			
10:00	93	100	88	93				22:00	23	28	27	27			
10:15	99	102	88	112				22:15	20	15	15	18			
10:30	113	96	108	129				22:30	13	17	10	12			
10:45	115	109	99	124				22:45	9	9	10	20			
11:00	123	114	128	128				23:00	23	19	29	17			
11:15	116	103	130	107				23:15	13	16	15	21			
11:30	117	120	125	113				23:30	13	15	12	12			
11:45	161	140	148	144				23:45	8	10	8	7			



Site notes:

Vehicle Speed Summary

Saanich Engineering Department

Count Id: [M0030-02](#)

Filename: [Royal Oak Dr between West Saanich Rd and Elk Lake Rd-Nov-2020.xlsm](#)

Location: Royal Oak Dr between West Saanich Rd and Elk Lake Rd

Note:

Direction: **East-West**

Dates: **November 22, 2020 To November 26, 2020**

Filtered data

AVG. SPEED	32 mph	51 km/h
50 % SPEED	32 mph	51 km/h
85 % SPEED	36 mph	58 km/h
95 % SPEED	38 mph	62 km/h

Location Map



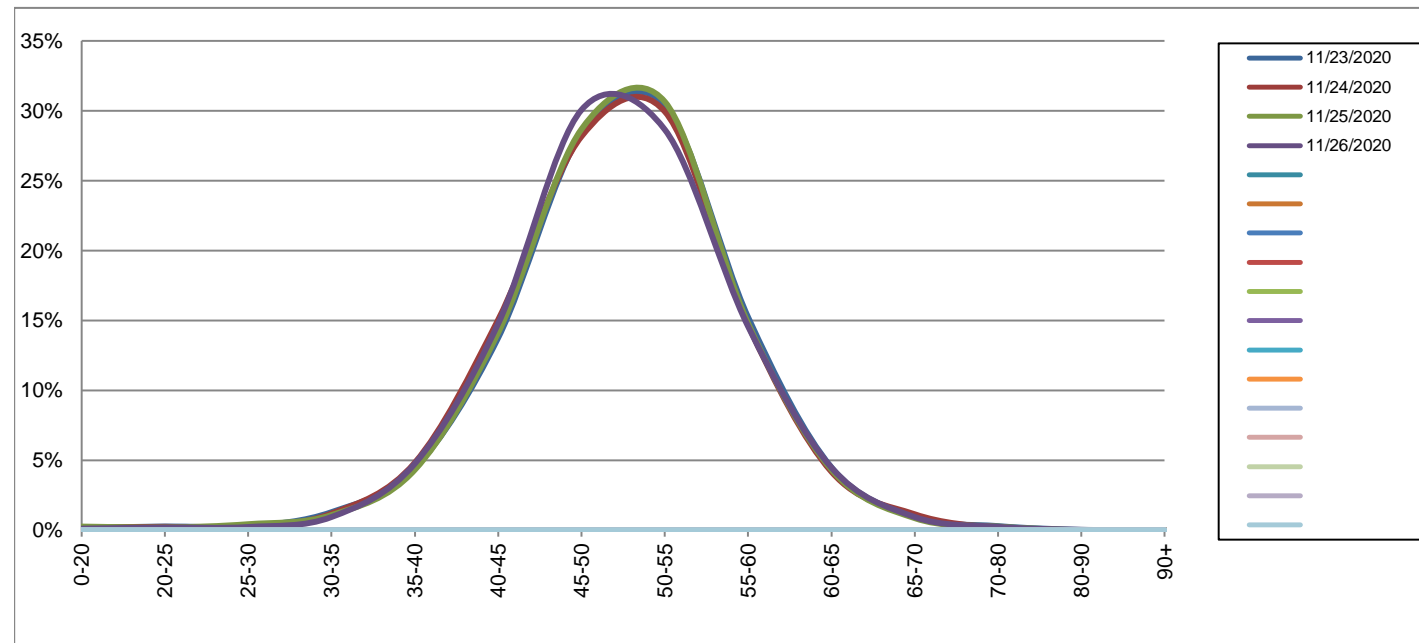
Royal Oak Dr between West Saanich Rd and Elk Lake Rd

Westbound
November 23, 2020 to November 26, 2020

Daily Speed Bin Percentages														Daily Speed Bin Volumes														Total	Avg.	
Bin #	1	2	3	4	5	6	7	8	9	10	11	12	13	14	1	2	3	4	5	6	7	8	9	10	11	12	13	14	Volume	Speed
Bin Speeds	0-20	20-25	25-30	30-35	35-40	40-45	45-50	50-55	55-60	60-65	65-70	70-80	80-90	90+	0-20	20-25	25-30	30-35	35-40	40-45	45-50	50-55	55-60	60-65	65-70	70-80	80-90	90+		
11/23/2020	0.2%	0.3%	0.3%	1.3%	4.4%	13.8%	28.4%	30.4%	15.2%	4.5%	1.0%	0.3%	0.0%	0.0%	12	20	21	97	334	1033	2130	2285	1144	338	72	22	2	0	7510	50
11/24/2020	0.2%	0.2%	0.2%	1.2%	4.8%	15.0%	28.2%	29.9%	14.7%	4.2%	1.1%	0.2%	0.0%	0.0%	14	18	16	89	360	1122	2100	2233	1095	312	85	12	1	0	7457	50
11/25/2020	0.3%	0.2%	0.4%	1.1%	4.3%	14.1%	28.7%	30.6%	14.8%	4.3%	0.9%	0.3%	0.0%	0.0%	20	15	33	83	331	1082	2198	2349	1134	332	66	20	0	1	7664	50
11/26/2020	0.1%	0.2%	0.2%	0.9%	4.8%	14.8%	30.1%	28.7%	14.6%	4.5%	0.9%	0.2%	0.0%	0.0%	9	15	18	74	373	1157	2355	2245	1142	351	74	19	2	0	7834	50
Total	0.2%	0.2%	0.3%	1.1%	4.6%	14.4%	28.8%	29.9%	14.8%	4.4%	1.0%	0.2%	0.0%	0.0%	55	68	88	343	1398	4394	8783	9112	4515	1333	297	73	5	1	30465	50

Speed Data Summary

Bin #	1	2	3	4	5	6	7	8	9	10	11	12	13	14	Total
Bin Speeds	0-20	20-25	25-30	30-35	35-40	40-45	45-50	50-55	55-60	60-65	65-70	70-80	80-90	90+	
Survey Total	55	68	88	343	1398	4394	8783	9112	4515	1333	297	73	5	1	30465
% Total	0.2%	0.2%	0.3%	1.1%	4.6%	14.4%	28.8%	29.9%	14.8%	4.4%	1.0%	0.2%	0.0%	0.0%	100%
Accumulated %	0.2%	0.4%	0.7%	1.8%	6.4%	20.8%	49.7%	79.6%	94.4%	98.8%	99.7%	100.0%	100.0%	100%	
Inverse Accum. %	99.8%	99.6%	99.3%	98.2%	93.6%	79.2%	50.3%	20.4%	5.6%	1.2%	0.3%	0.0%	0.0%	0.0%	
Average Speed	50 KM/H														



Site notes:

Royal Oak Dr between West Saanich Rd and Elk Lake Rd

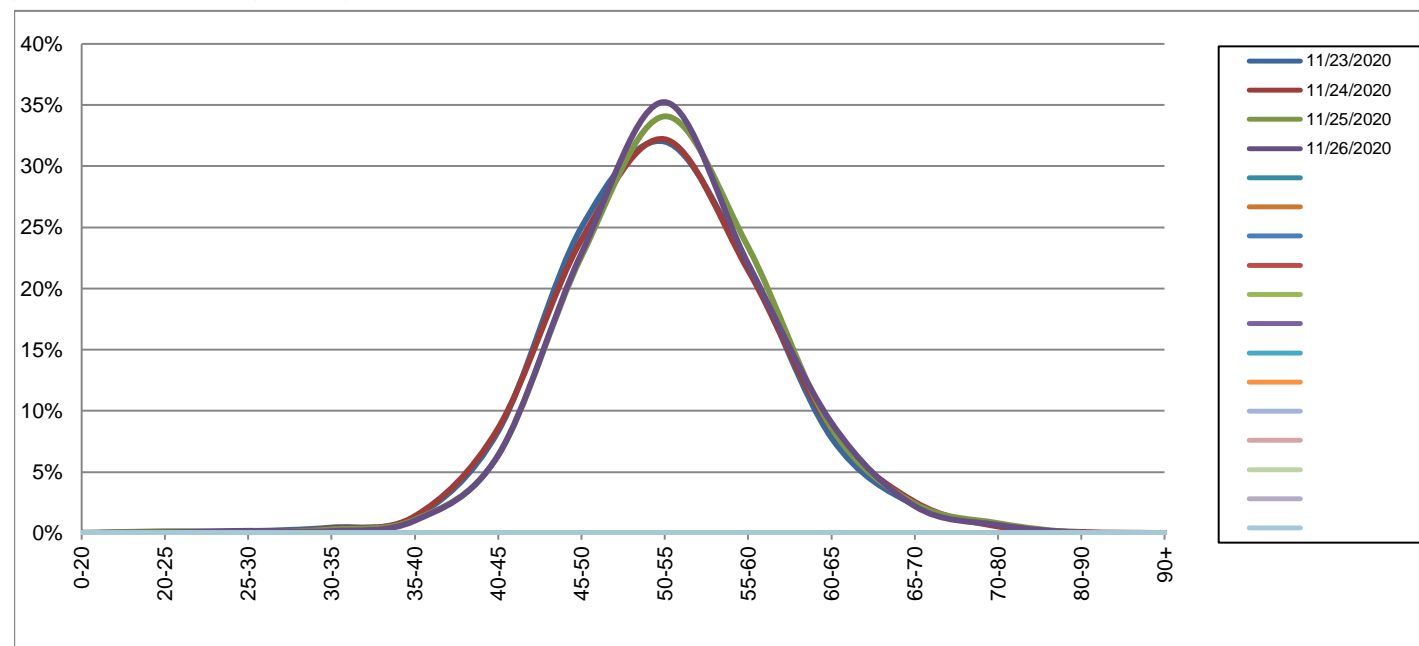
Eastbound

November 23, 2020 to November 26, 2020

Daily Speed Bin Percentages														Daily Speed Bin Volumes														Total	Avg.	
Bin #	1	2	3	4	5	6	7	8	9	10	11	12	13	14	1	2	3	4	5	6	7	8	9	10	11	12	13	14	Volume	Speed
Bin Speeds	0-20	20-25	25-30	30-35	35-40	40-45	45-50	50-55	55-60	60-65	65-70	70-80	80-90	90+	0-20	20-25	25-30	30-35	35-40	40-45	45-50	50-55	55-60	60-65	65-70	70-80	80-90	90+		
11/23/2020	0.0%	0.1%	0.2%	0.5%	1.3%	8.3%	25.0%	32.0%	21.8%	7.8%	2.3%	0.7%	0.0%	0.0%	0	7	11	31	88	560	1681	2152	1466	525	154	46	1	1	6723	52
11/24/2020	0.0%	0.1%	0.1%	0.4%	1.4%	8.6%	24.0%	32.2%	21.5%	8.6%	2.6%	0.5%	0.1%	0.0%	0	6	6	25	94	579	1619	2173	1451	577	173	37	7	1	6748	53
11/25/2020	0.0%	0.2%	0.1%	0.3%	1.1%	6.4%	22.6%	34.1%	23.4%	8.6%	2.4%	0.8%	0.0%	0.0%	0	11	7	21	76	435	1549	2333	1602	589	166	56	2	0	6847	53
11/26/2020	0.0%	0.1%	0.2%	0.2%	1.0%	6.4%	22.9%	35.2%	22.0%	9.0%	2.2%	0.7%	0.0%	0.0%	3	5	14	12	73	454	1630	2511	1570	644	158	48	3	1	7126	53
Total	0.0%	0.1%	0.1%	0.3%	1.2%	7.4%	23.6%	33.4%	22.2%	8.5%	2.4%	0.7%	0.0%	0.0%	3	29	38	89	331	2028	6479	9169	6089	2335	651	187	13	3	27444	53

Speed Data Summary

Bin #	1	2	3	4	5	6	7	8	9	10	11	12	13	14	Total
Bin Speeds	0-20	20-25	25-30	30-35	35-40	40-45	45-50	50-55	55-60	60-65	65-70	70-80	80-90	90+	
Survey Total	3	29	38	89	331	2028	6479	9169	6089	2335	651	187	13	3	27444
% Total	0.0%	0.1%	0.1%	0.3%	1.2%	7.4%	23.6%	33.4%	22.2%	8.5%	2.4%	0.7%	0.0%	0.0%	100%
Accumulated %	0.0%	0.1%	0.3%	0.6%	1.8%	9.2%	32.8%	66.2%	88.4%	96.9%	99.3%	99.9%	100.0%	100%	
Inverse Accum. %	100.0%	99.9%	99.7%	99.4%	98.2%	90.8%	67.2%	33.8%	11.6%	3.1%	0.7%	0.1%	0.0%	0.0%	
Average Speed	53 KM/H														



Site notes:

Royal Oak Dr between West Saanich Rd and Elk Lake Rd

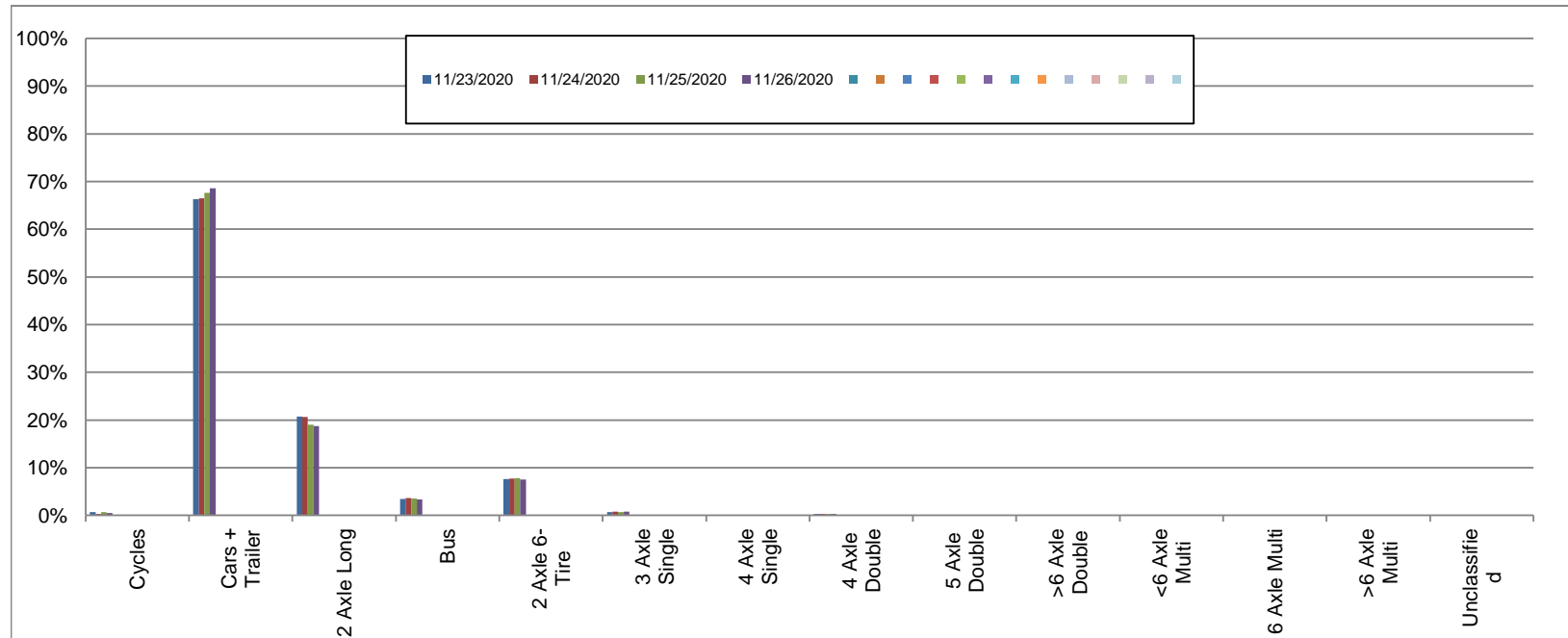
Westbound

November 23, 2020 to November 26, 2020

Daily Class Bin Percentages															Daily Class Bin Volumes														
Bin #	1	2	3	4	5	6	7	8	9	10	11	12	13	14	1	2	3	4	5	6	7	8	9	10	11	12	13	14	Total Volume
Bin Class	Cycles	Cars + Trailer	2 Axle Long	Bus	2 Axle 6-Tire	3 Axle Single	4 Axle Single	4 Axle Double	5 Axle Double	>6 Axle Double	<6 Axle Multi	6 Axle Multi	>6 Axle Multi	Unclassified	Cycles	Cars + Trailer	2 Axle Long	Bus	2 Axle 6-Tire	3 Axle Single	4 Axle Single	4 Axle Double	5 Axle Double	>6 Axle Double	<6 Axle Multi	6 Axle Multi	>6 Axle Multi	Unclassified	
11/23/2020	0.6%	66.3%	20.7%	3.5%	7.6%	0.7%	0.1%	0.3%	0.0%	0.1%	0.0%	0.0%	0.0%	0.1%	48	4978	1553	261	570	51	6	24	3	7	0	0	0	9	7510
11/24/2020	0.3%	66.5%	20.7%	3.6%	7.7%	0.7%	0.1%	0.3%	0.1%	0.1%	0.0%	0.0%	0.0%	0.0%	24	4956	1540	267	577	55	5	19	4	7	0	0	0	3	7457
11/25/2020	0.7%	67.7%	19.0%	3.5%	7.8%	0.7%	0.1%	0.3%	0.0%	0.1%	0.0%	0.0%	0.0%	0.1%	51	5186	1455	269	600	53	8	26	2	7	0	0	0	7	7664
11/26/2020	0.5%	68.6%	18.7%	3.3%	7.5%	0.8%	0.1%	0.3%	0.0%	0.1%	0.0%	0.0%	0.0%	0.1%	40	5374	1468	259	586	62	4	23	3	6	0	0	0	9	7834
Total	0.5%	67.3%	19.7%	3.5%	7.7%	0.7%	0.1%	0.3%	0.0%	0.1%	0.0%	0.0%	0.0%	0.1%	163	20494	6016	1056	2333	221	23	92	12	27	0	0	0	28	30465

Class Data Summary

Bin #	1	2	3	4	5	6	7	8	9	10	11	12	13	14	Total Volume
Bin Class	Cycles	Cars + Trailer	2 Axle Long	Bus	2 Axle 6-Tire	3 Axle Single	4 Axle Single	4 Axle Double	5 Axle Double	>6 Axle Double	<6 Axle Multi	6 Axle Multi	>6 Axle Multi	Unclassified	Total Volume
Survey Total	163	20494	6016	1056	2333	221	23	92	12	27	0	0	0	28	30465
% Total	0.5%	67.3%	19.7%	3.5%	7.7%	0.7%	0.1%	0.3%	0.0%	0.1%	0.0%	0.0%	0.0%	0.1%	100%
Accumulated %	0.5%	67.8%	87.6%	91.0%	98.7%	99.4%	99.5%	99.8%	99.8%	99.9%	99.9%	99.9%	99.9%	100.0%	
Inv. Accum. %	99.5%	32.2%	12.4%	9.0%	1.3%	0.6%	0.5%	0.2%	0.2%	0.1%	0.1%	0.1%	0.1%	0.0%	



Classification Descriptions

Bin #	Bin Description
1	Motorcycles
2	Passenger cars, including those with recreational trailers
3	2-axle pick-ups, vans, and RVs, including those with recreational trailers
4	Buses
5	2-axle, 6-tire single units
6	3-axle single units
7	4-axle single units
8	3-axle or 4-axle double unit
9	5-axle double unit
10	6-, 7-, or 8-axle double unit
11	5-axle multiple unit
12	6-axle multiple unit
13	7-or-more-axle multiple unit
14	Vehicles that could not be classified

Site notes:

Royal Oak Dr between West Saanich Rd and Elk Lake Rd

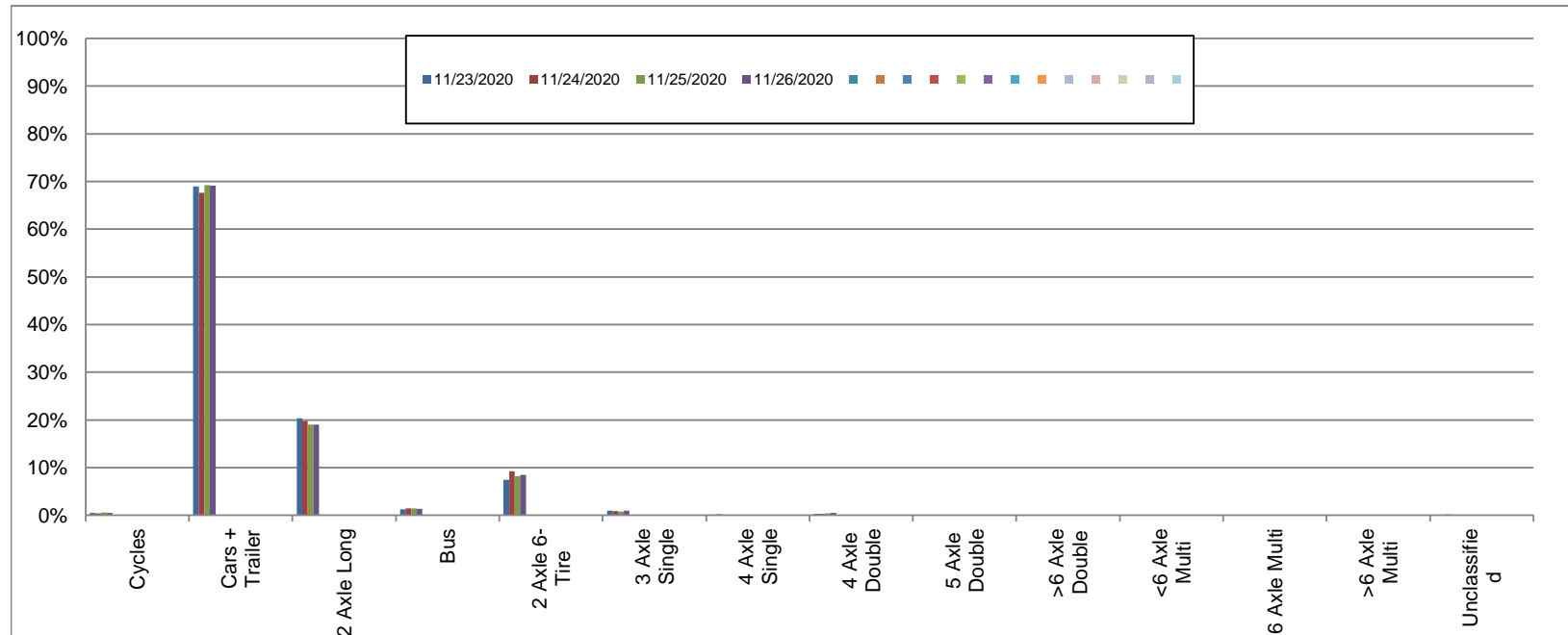
Eastbound

November 23, 2020 to November 26, 2020

Daily Class Bin Percentages															Daily Class Bin Volumes											Total Volume			
Bin #	1	2	3	4	5	6	7	8	9	10	11	12	13	14	1	2	3	4	5	6	7	8	9	10	11		12	13	14
Bin Class	Cycles	Cars + Trailer	2 Axle Long	Bus	2 Axle 6-Tire	3 Axle Single	4 Axle Single	4 Axle Double	5 Axle Double	>6 Axle Double	<6 Axle Multi	6 Axle Multi	>6 Axle Multi	Unclassified	Cycles	Cars + Trailer	2 Axle Long	Bus	2 Axle 6-Tire	3 Axle Single	4 Axle Single	4 Axle Double	5 Axle Double	>6 Axle Double	<6 Axle Multi	6 Axle Multi	>6 Axle Multi	Unclassified	
11/23/2020	0.5%	68.9%	20.4%	1.2%	7.4%	0.9%	0.1%	0.3%	0.1%	0.0%	0.0%	0.0%	0.0%	0.1%	34	4633	1369	84	496	63	7	23	8	1	0	0	1	4	6723
11/24/2020	0.4%	67.6%	19.8%	1.5%	9.2%	0.9%	0.2%	0.3%	0.1%	0.0%	0.0%	0.0%	0.0%	0.0%	27	4564	1336	98	621	61	11	21	6	1	0	0	0	2	6748
11/25/2020	0.6%	69.2%	19.0%	1.4%	8.1%	0.8%	0.1%	0.4%	0.1%	0.0%	0.0%	0.0%	0.0%	0.2%	42	4740	1300	97	558	56	8	26	4	2	0	0	0	14	6847
11/26/2020	0.5%	69.1%	19.0%	1.3%	8.4%	0.9%	0.1%	0.4%	0.1%	0.0%	0.0%	0.0%	0.0%	0.1%	36	4925	1352	94	602	66	6	32	5	1	0	0	1	6	7126
Total	0.5%	68.7%	19.5%	1.4%	8.3%	0.9%	0.1%	0.4%	0.1%	0.0%	0.0%	0.0%	0.0%	0.1%	139	18862	5357	373	2277	246	32	102	23	5	0	0	2	26	27444

Class Data Summary

Bin #	1	2	3	4	5	6	7	8	9	10	11	12	13	14	Total Volume
Bin Class	Cycles	Cars + Trailer	2 Axle Long	Bus	2 Axle 6-Tire	3 Axle Single	4 Axle Single	4 Axle Double	5 Axle Double	>6 Axle Double	<6 Axle Multi	6 Axle Multi	>6 Axle Multi	Unclassified	Total Volume
Survey Total	139	18862	5357	373	2277	246	32	102	23	5	0	0	2	26	27444
% Total	0.5%	68.7%	19.5%	1.4%	8.3%	0.9%	0.1%	0.4%	0.1%	0.0%	0.0%	0.0%	0.0%	0.1%	100%
Accumulated %	0.5%	69.2%	88.8%	90.1%	98.4%	99.3%	99.4%	99.8%	99.9%	99.9%	99.9%	99.9%	99.9%	100.0%	
Inv. Accum. %	99.5%	30.8%	11.2%	9.9%	1.6%	0.7%	0.6%	0.2%	0.1%	0.1%	0.1%	0.1%	0.1%	0.0%	



Classification Descriptions

Bin #	Bin Description
1	Motorcycles
2	Passenger cars, including those with recreational trailers
3	2-axle pick-ups, vans, and RVs, including those with recreational trailers
4	Buses
5	2-axle, 6-tire single units
6	3-axle single units
7	4-axle single units
8	3-axle or 4-axle double unit
9	5-axle double unit
10	6-, 7-, or 8-axle double unit
11	5-axle multiple unit
12	6-axle multiple unit
13	7-or-more-axle multiple unit
14	Vehicles that could not be classified

Site notes: